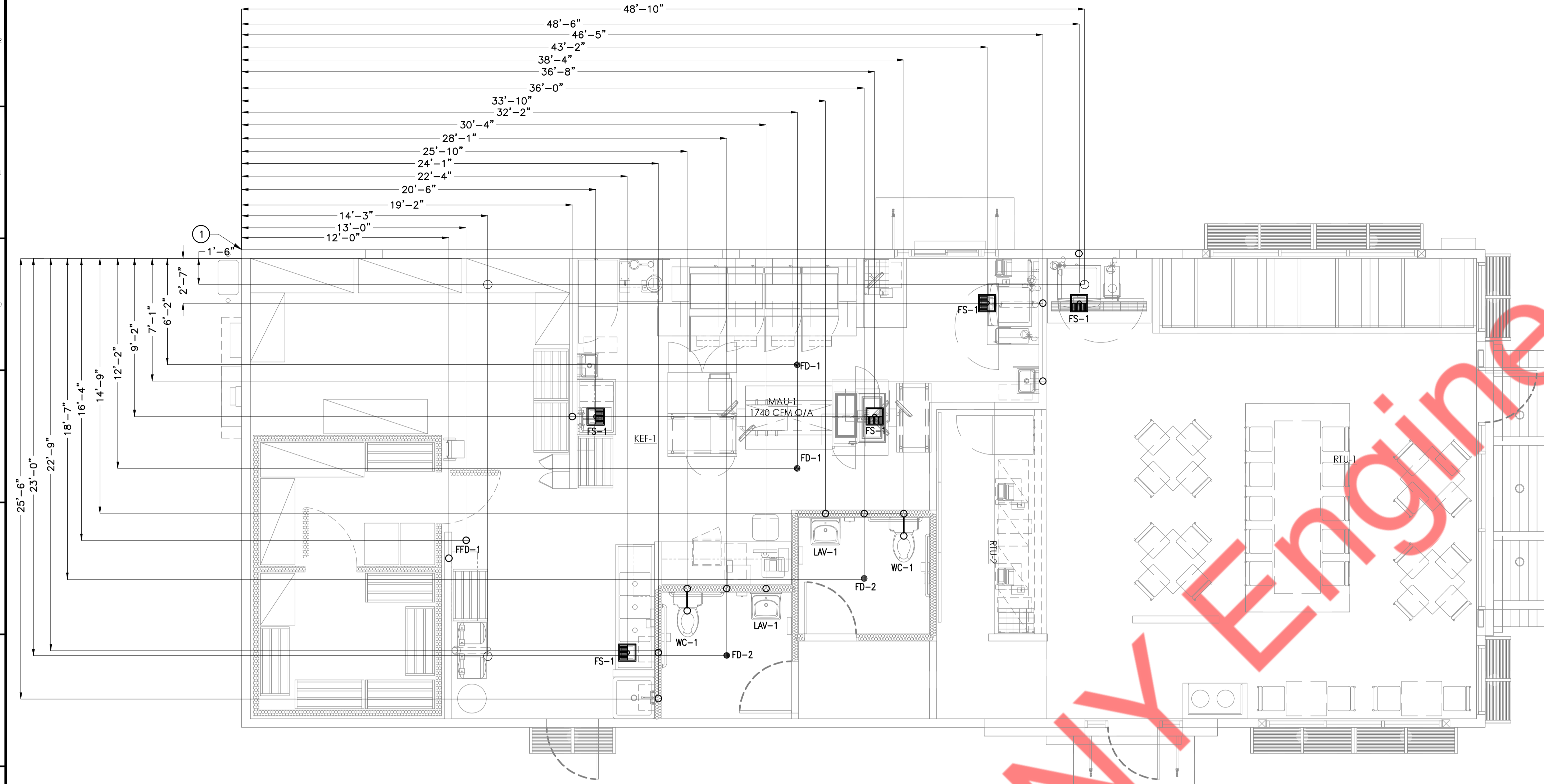
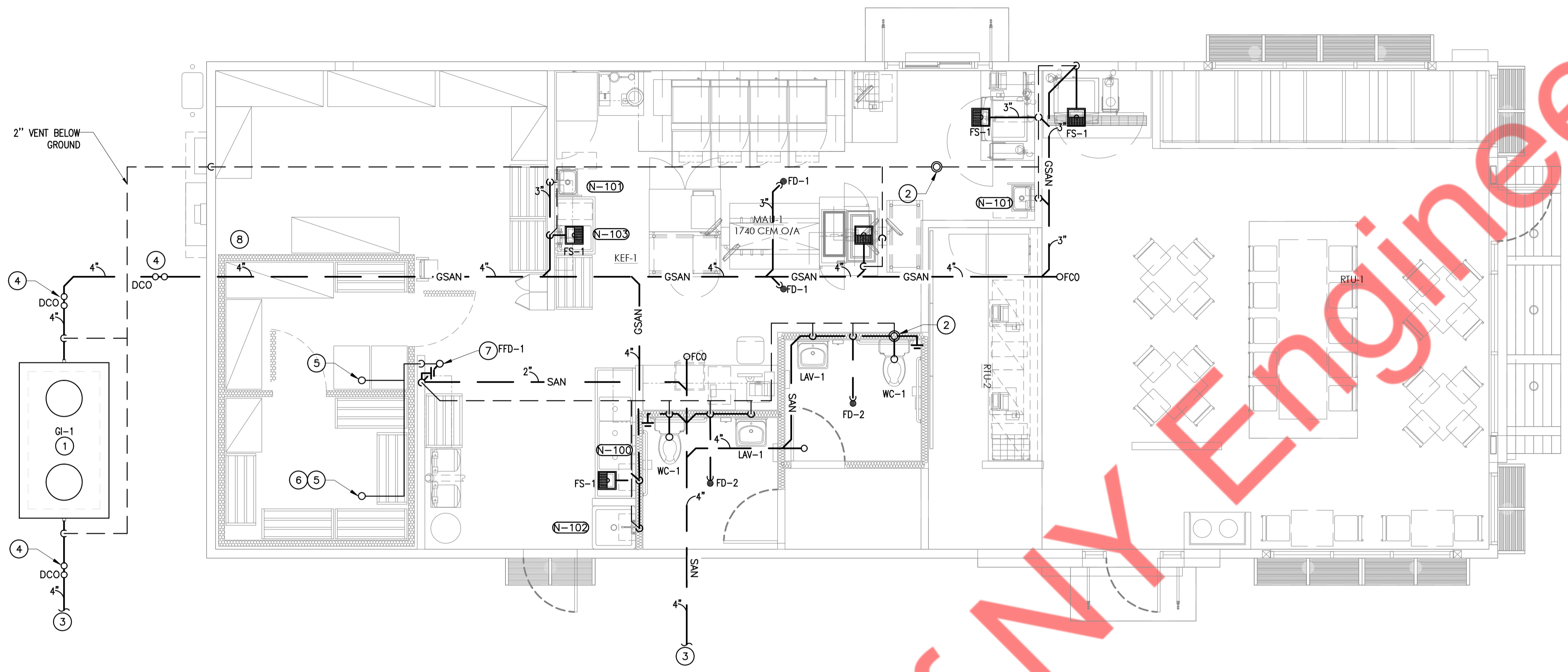


| KEYED NOTES | |
|-------------|---|
| ① | DIMENSIONS SHOWN ARE FROM EXTERIOR FACE OF SLAB |



PLUMBING UNDERGROUND ROUGH-IN PLAN
SCALE: 1/4" = 1'-0" | 1

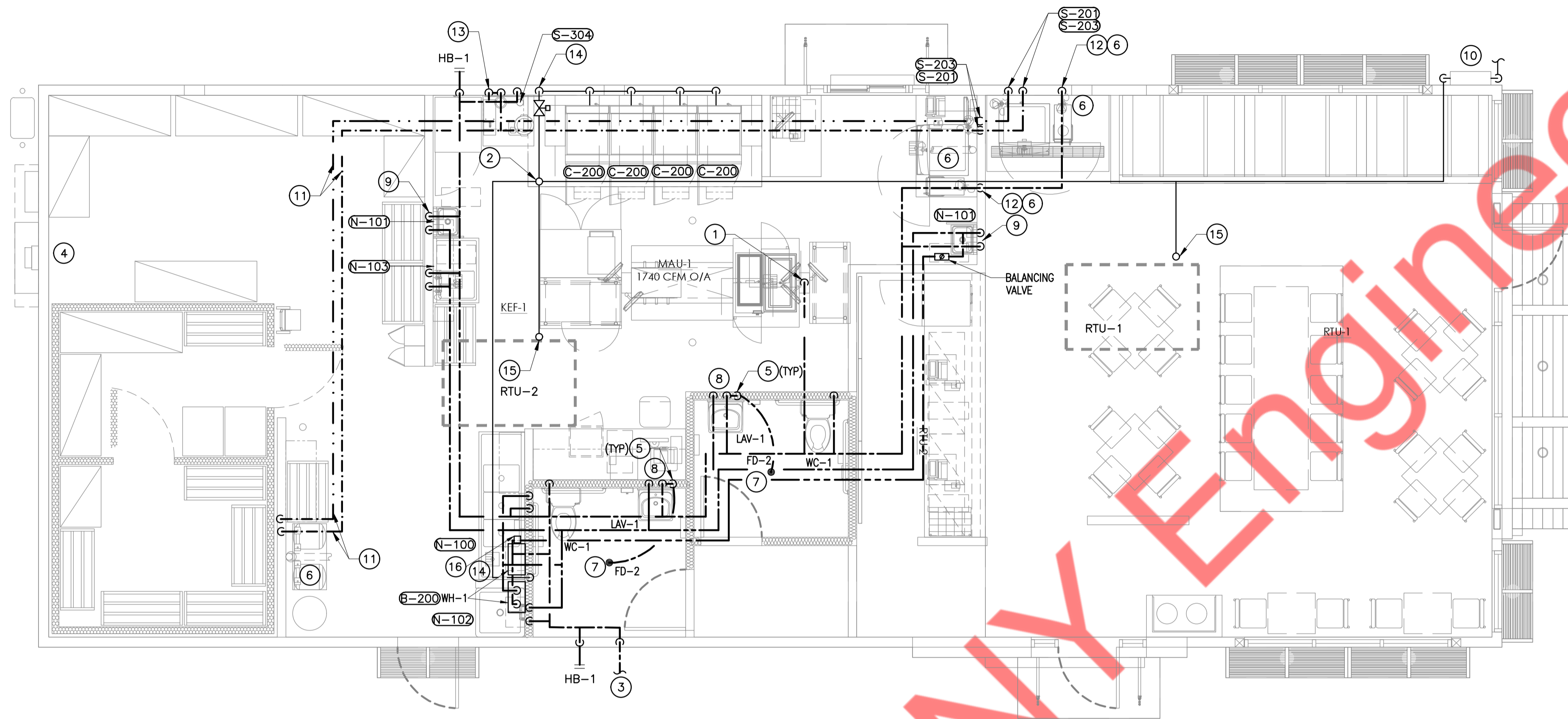
Property of MY Engineers



| GENERAL NOTES | |
|---------------|---|
| 1. | KEY NOTES WITH ELLIPTICAL SYMBOL AND NUMBER CORRESPOND TO KITCHEN EQUIPMENT SHOWN IN KITCHEN PLAN SHEETS. REFER TO SHEETS A2.0 AND A2.1 FOR SUPPLEMENTAL INFORMATION. |
| 2. | ALL EXPOSED PIPING IN PUBLIC AREAS SHALL BE INSTALLED AS TIGHT AS POSSIBLE TO THE WARM SIDE OF THE EXPOSED ROOF STRUCTURE. |
| 3. | THE INSTALLATION OF THE PLUMBING SYSTEMS SHALL BE COORDINATED WITH ALL ELECTRICAL AND MECHANICAL EQUIPMENT, AND STRUCTURAL SLAB AND FRAMING. |
| 4. | REFER TO PLUMBING SHEET P3.1 FOR PLUMBING FIXTURE AND EQUIPMENT SCHEDULES INCLUDING SPECIFICATIONS AND ROUGH-IN SIZES. |
| 5. | PLUMBING CONTRACTOR SHALL BE RESPONSIBLE FOR THE COMPLETE INSTALLATION OF ALL DRAIN LINES FROM KITCHEN EQUIPMENT. ALL INDIRECT DRAIN LINES SHALL BE INSTALLED WITH APPROVED AIR GAPS. |
| 6. | REFER TO ARCHITECTURAL AND MILLWORK DRAWINGS FOR DETAILS OF COUNTERTOPS, CASEWORK, AND OTHER FIXTURES, SHOWING EXACT LOCATION OF OPENINGS FOR PLUMBING ITEMS BEING INSTALLED. COORDINATE THE COMPLETE INSTALLATION WITH THE GENERAL CONTRACTOR. |
| 7. | THE PLUMBING CONTRACTOR SHALL BE RESPONSIBLE FOR COMPLETE INSTALLATION OF SODA SLEEVE LINES AND COORDINATION WITH OTHER DISCIPLINES. |
| 8. | ALL WALL PIPING STUB-OUTS SHALL BE SECURELY TIED TO THE STRUCTURE WITH SUFFICIENT BACKING TO ELIMINATE MOVEMENT. FINAL CONNECTIONS TO KITCHEN SINKS SHALL BE HARD PIPED. |
| 9. | PITCH ALL WASTE AND DRAIN LINES A MINIMUM OF 1/4" PER FOOT IN THE DIRECTION OF FLOW, OR AS REQUIRED BY LOCAL CODE. |
| 10. | ALL OPENINGS IN DWV SYSTEMS RESULTING FROM INSTALLATION ROUGH-IN SHALL BE PROTECTED WITH A TEST PLUG THAT IS SECURELY LOCKED IN PLACE UNTIL FINAL FINISHED CONNECTIONS ARE INSTALLED. |
| 11. | PLUMBING CONTRACTOR TO ARRANGE AND PAY FOR ALL REQUIRED FEES, PERMITS, AND MISCELLANEOUS COSTS ASSOCIATED WITH THE PLUMBING WORK PER LOCAL PLUMBING CODES. |
| 12. | ALL PENETRATIONS IN FIRE RATED WALL ASSEMBLIES SHALL BE SEALED WITH UL LISTED FIRE STOPPING MATERIAL. |

| KEYED NOTES | |
|-------------|--|
| ① | GREASE INTERCEPTOR FURNISHED AND INSTALLED BY THE G.C. FIELD COORDINATE THE COMPLETE INSTALLATION FOR THE TENANT'S USE AS SHOWN. IF INSTALLED IN VEHICLE DRIVE AISLE, PROVIDE TRAFFIC RATED COVERS. REFER SITE PLAN AS-1 FOR MORE DETAILS. |
| ② | FIELD COORDINATE INSTALLATION OF THE VTR'S AS SHOWN. PROVIDE MINIMUM 10'-0" HORIZONTAL CLEARANCE FROM MECHANICAL INTAKES. |
| ③ | SEE CIVIL PLANS FOR CONTINUATION OF SANITARY SEWER LINE. |
| ④ | FIELD COORDINATE THE INSTALLATION OF THE 4" GREASE WASTE PIPING AND DOUBLE CLEAN-OUT ON SITE. REFER TO CIVIL PLANS. |
| ⑤ | ROUTE WALK-IN COOLER CONDENSATE DRAIN LINE AS HIGH AS POSSIBLE AND ALONG WALLS AS SHOWN. INSULATE ALL CONDENSATE PIPING AND PITCH A MINIMUM OF 1/4" PER FOOT IN THE DIRECTION OF FLOW. SEAL ALL COOLER WALL PENETRATIONS WATER TIGHT AND COVER EACH WITH AN ESCUTCHEON PLATE. PROVIDE FULL SIZE TRAP AND EXTEND ABOVE FLOOR AND BEHIND EQUIPMENT FOR AN INDIRECT CONNECTION TO AN APPROVED RECEPTOR. |
| ⑥ | CONDENSATE DRAIN LINE IN THE WALK-IN FREEZER SHALL BE HEAT TRACED TO PREVENT FREEZING. HEAT TRACE TAPE SHALL BE PROVIDED BY THE PLUMBING CONTRACTOR. |
| ⑦ | ROUTE CONDENSATE PIPING DOWN IN WALL AND TERMINATE WITH AN INDIRECT CONNECTION AT APPROVED RECEPTOR. |
| ⑧ | NO PIPING SHALL BE RUN ABOVE OR BELOW ELECTRIC PANELS. |

PLUMBING WASTE & VENT FLOOR PLAN
SCALE: 1/4" = 1'-0"



PLUMBING WATER & GAS FLOOR PLAN
SCALE: 1/4" = 1'-0"

1

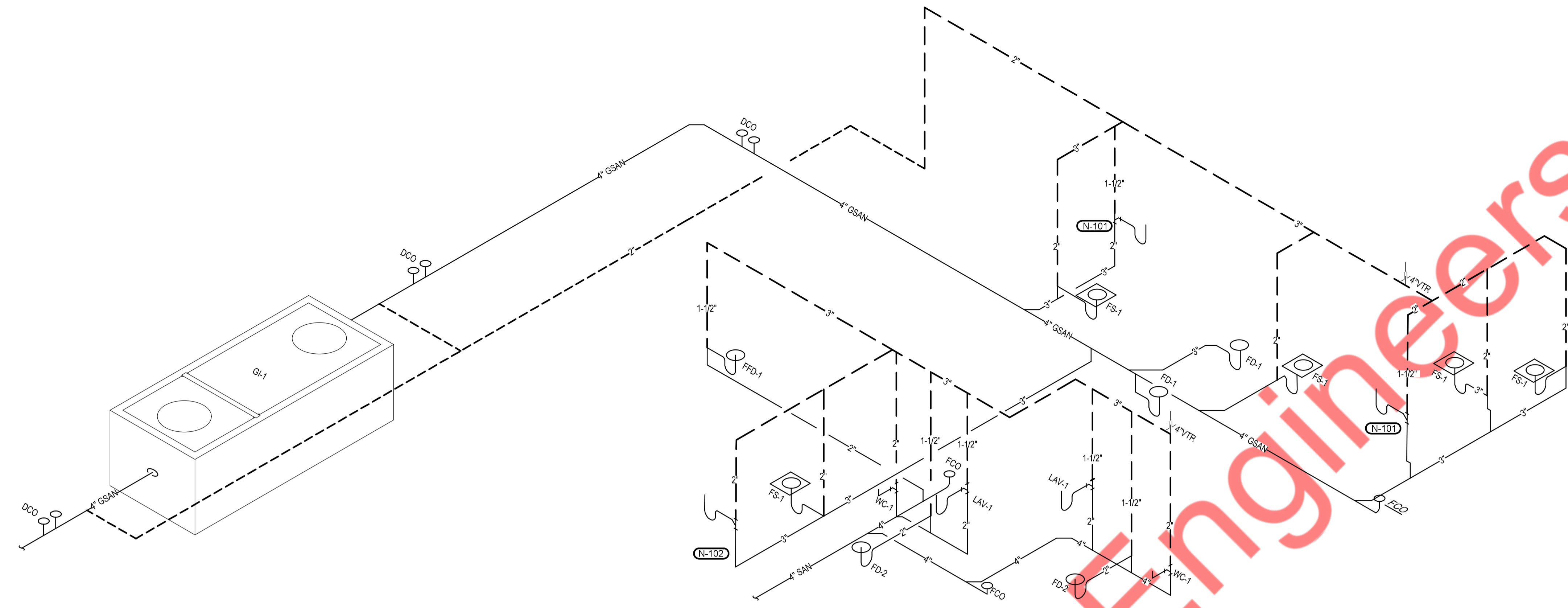
GENERAL NOTES

1. KEY NOTES WITH ELLIPTICAL SYMBOL AND NUMBER CORRESPOND TO KITCHEN EQUIPMENT SHOWN IN KITCHEN PLAN SHEETS. REFER TO SHEETS A2.0 AND A2.1 FOR SUPPLEMENTAL INFORMATION.
2. ALL EXPOSED PIPING IN PUBLIC AREAS SHALL BE INSTALLED AS TIGHT AS POSSIBLE TO THE WARM SIDE OF THE EXPOSED ROOF STRUCTURE.
3. THE INSTALLATION OF THE PLUMBING SYSTEMS SHALL BE COORDINATED WITH ALL ELECTRICAL AND MECHANICAL EQUIPMENT, AND STRUCTURAL SLAB AND FRAMING.
4. REFER TO PLUMBING SHEET P3.1 FOR PLUMBING FIXTURE AND EQUIPMENT SCHEDULES INCLUDING SPECIFICATIONS AND ROUGH-IN SIZES.
5. PLUMBING CONTRACTOR SHALL BE RESPONSIBLE FOR THE COMPLETE INSTALLATION OF ALL DRAIN LINES FROM KITCHEN EQUIPMENT. ALL INDIRECT DRAIN LINES SHALL BE INSTALLED WITH APPROVED AIR GAPS.
6. REFER TO ARCHITECTURAL AND MILLWORK DRAWINGS FOR DETAILS OF COUNTERTOPS, CASEWORK, AND OTHER FIXTURES, SHOWING EXACT LOCATION OF OPENINGS FOR PLUMBING ITEMS BEING INSTALLED. COORDINATE THE COMPLETE INSTALLATION WITH THE GENERAL CONTRACTOR.
7. THE PLUMBING CONTRACTOR SHALL BE RESPONSIBLE FOR COMPLETE INSTALLATION OF SODA SLEEVE LINES AND COORDINATION WITH OTHER DISCIPLINES.
8. ALL WALL PIPING STUB-OUTS SHALL BE SECURELY TIED TO THE STRUCTURE WITH SUFFICIENT BACKING TO ELIMINATE MOVEMENT. FINAL CONNECTIONS TO KITCHEN SINKS SHALL BE HARD PIPED.
9. PITCH ALL WASTE AND DRAIN LINES A MINIMUM OF 1/4" PER FOOT IN THE DIRECTION OF FLOW, OR AS REQUIRED BY LOCAL CODE.
10. ALL OPENINGS IN DWV SYSTEMS RESULTING FROM INSTALLATION ROUGH-IN SHALL BE PROTECTED WITH A TEST PLUG THAT IS SECURELY LOCKED IN PLACE UNTIL FINAL FINISHED CONNECTIONS ARE INSTALLED.
11. PLUMBING CONTRACTOR TO ARRANGE AND PAY FOR ALL REQUIRED FEES, PERMITS, AND MISCELLANEOUS COSTS ASSOCIATED WITH THE PLUMBING WORK PER LOCAL PLUMBING CODES.
12. ALL PENETRATIONS IN FIRE RATED WALL ASSEMBLIES SHALL BE SEALED WITH UL LISTED FIRE STOPPING MATERIAL.

KEYED NOTES

1. STUB-DOWN 1/2" COLD WATER LINE FOR HOT WELLS.
2. EXTEND GAS PIPING DOWN THRU ROOF TO INTERIOR EQUIPMENT.
3. REFER TO CIVIL DRAWINGS FOR CONTINUATION, SIZING, EXACT LOCATION OF DOMESTIC WATER MAIN, AND REDUCED PRESSURE BACKFLOW ASSEMBLIES LOCATED AT THE METER PIT.
4. NO PIPING SHALL BE RUN ABOVE OR BELOW ELECTRIC PANELS.
5. COORDINATE INSTALLATION OF ACCESSIBLE TRAP PRIMER (TP-1) VALVE BELOW THE LAVATORY. VALVE SHALL BE RECESSED IN THE WALL AND COVERED WITH ACCESS PANEL.
6. REFER TO SHEET P3.0 FOR BACKFLOW PREVENTION DEVICE REQUIRED FOR A COMPLETE INSTALLATION WITH THIS EQUIPMENT.
7. 1/2" CW BELOW FLOOR, FROM TRAP PRIMER TO RECEPTOR.
8. ROUTE 1/2" HW & CW TO RESTROOM LAVATORY FAUCET. INSTALL SUPPLIES COMPLETE WITH HOT WATER TEMPERING VALVE (MXV-1). SET MAX TEMPERATURE TO 110°F.
9. ROUTE 1/2" HW & CW TO HAND WASHING FIXTURE. INSTALL SUPPLIES COMPLETE WITH HOT WATER TEMPERING VALVE (MXV-1). SET MAX TEMPERATURE TO 110°F.
10. LINE SIZED LOW PRESSURE GAS METER, REGULATOR, AND OTHER ITEMS FOR A COMPLETE ASSEMBLY TO BE PROVIDED BY THE LOCAL UTILITY COMPANY.
11. BUNDLED SYRUP LINES RUNNING IN CEILING TO BEVERAGE DISPENSERS S-201 AND FILTERED WATER LINES TO ICE MAKERS S-202.
12. 1/4" COPPER FILTERED WATER LINE DOWN IN WALL TO BUNN COFFEE/TEA BREWER S-203.
13. 1/2" FILTERED WATER FROM WATER FILTER S-304 TO BATTER WATER DISPENSER P-300.
14. ROUTE GAS DOWN TO EQUIPMENT WITH GAS COCK, DIRT LEG AND UNION. CONNECT TO GAS MANIFOLDS WHERE REQUIRED.
15. PROVIDE GAS SUPPLY CONNECTION WITH SHUT-OFF VALVE, SEDIMENT TRAP AND FLEXIBLE CONNECTION.
16. PROVIDE HOT WATER RECIRCULATION PUMP. EXTEND PIPING TO WATER HEATER AS PER MANUFACTURER'S INSTRUCTIONS.

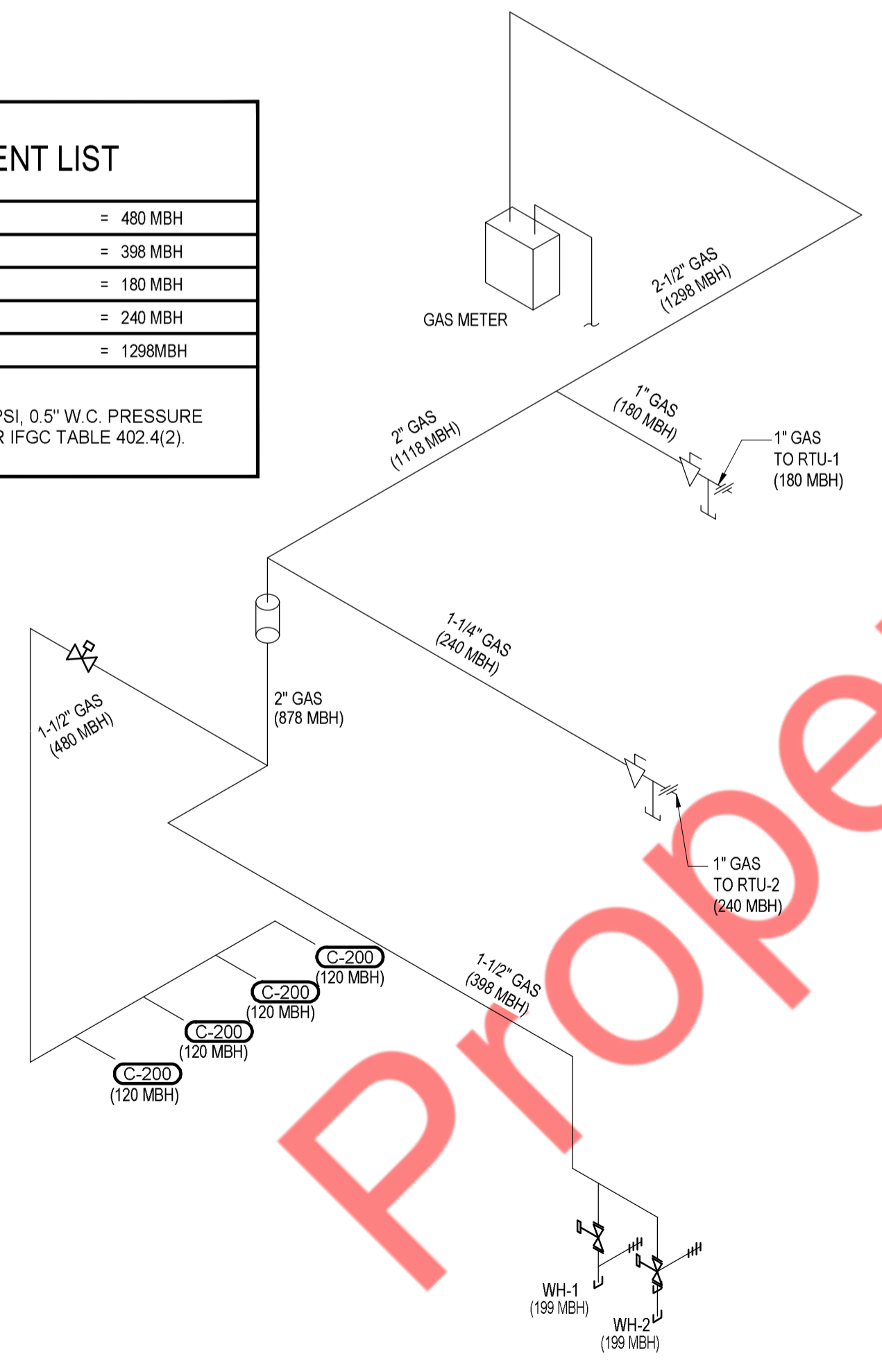
Property of NY Engineers



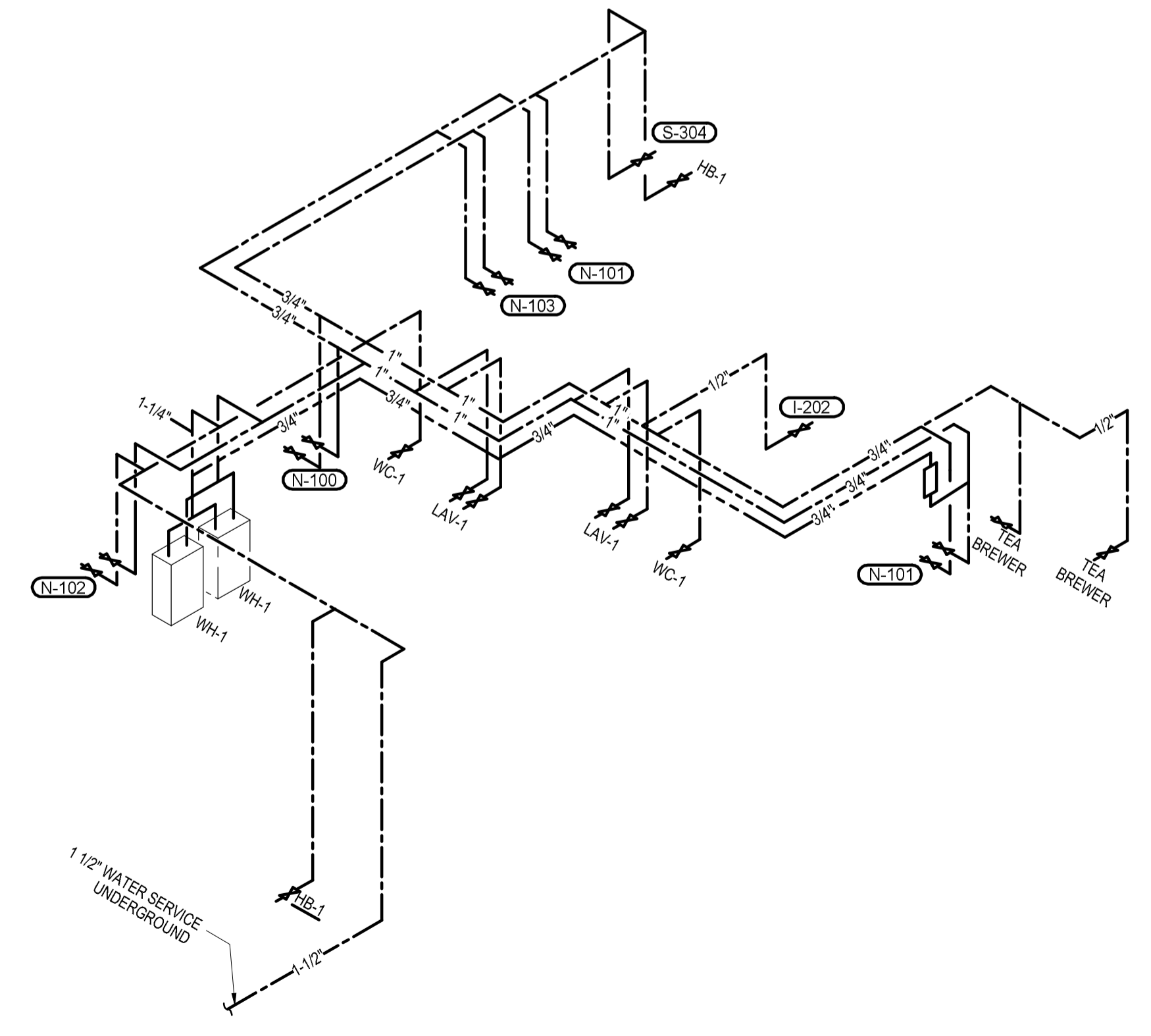
PLUMBING RISER DIAGRAM - WASTE & VENT
NTS 1

| GAS EQUIPMENT LIST | | |
|----------------------|---------------|------------|
| 24" FRYER | (4 @ 120 MBH) | = 480 MBH |
| WATER HEATERS | (2 @ 199 MBH) | = 398 MBH |
| RTU-1 | | = 180 MBH |
| RTU-2 | | = 240 MBH |
| TOTAL CONNECTED LOAD | | = 1298 MBH |

NOTE:
NATURAL GAS PIPE SIZING AT < 2.0 PSI, 0.5" W.C. PRESSURE DROP, 120' DEVELOPED LENGTH PER IFGC TABLE 402.4(2).



PLUMBING RISER DIAGRAM - GAS
NTS 2



PLUMBING RISER DIAGRAM - DOMESTIC WATER
NTS 3